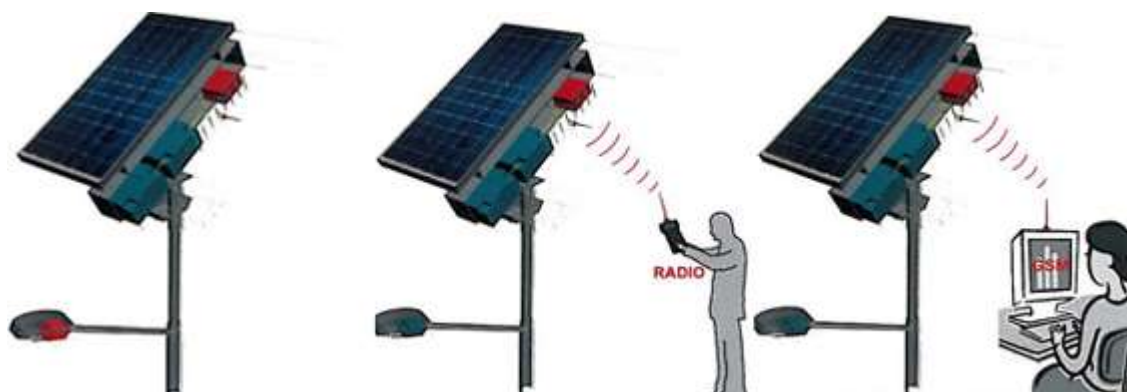




Lampile alimentate din surse de energie solara, sunt folosite tot mai intens in solutii de iluminat stradal. Ele functioneaza dupa un principiu foarte simplu. Lumina din timpul zilei este transformata in curent electric de un panou solar , care la randul ei este inmagazinata intr-un acumulator. Energia din acest acumulator este transformata din nou in lumina de un bec economic pe timpul noptii. Lampa solara este comandata de un mic senzor de lumina care porneste si opreste automat lampa. Puterea luminoasa este direct dependenta de puterea panoului solar, acumulatorului si al becului economic. Oferta spre vanzare a acestor sisteme de iluminat public, este noua in Romania. Aceste sisteme ecologice folosite in amenajari turistice sau spatii verzi ale unei case, ofera o ambianta deosebit de placuta.



1. Seria - LAMPI cu LED





[Frame1]

PRODUCT CODE	SSL20B-M-LED / SSL20-M-LED
PV MODULE	Monocrystalline Silicon
MODULE POWER	150Wp (northern IT) - 125Wp (central IT) - 100Wp (southern IT)
KIND OF LAMP	LAMP WITH No. 20 LED (efficiency: 100lm/W)
LIGHT COLOUR	White Light
LUMEN	2000
LUX ON THE GROUND	21 lux (0 ml.) - 5 lux (10 ml.)
BATTERIES CAPACITY	200Ah - 12V - PB sealed (2x 100Ah)
BATTERIES HOUSING	Top of the pole /on the ground
REMOTE CONTROL	RADIO CONTROL
(OPTIONAL)	GSM CONTROL





[Frame2]

PRODUCT CODE	SSL24B-M-LED / SSL24-M-LED
PV MODULE	Monocrystalline Silicon
MODULE POWER	150Wp (northern IT) - 125Wp (central IT) - 100Wp (southern IT)
KIND OF LAMP	LAMP WITH No. 24 LED (efficiency: 100 lm/W)
LIGHT COLOUR	White Light
LUMEN	2400
LUX ON THE GROUND	25 lux (0 ml.) - 5 lux (10 ml.)
BATTERIES CAPACITY	200Ah - 12V - PB sealed (2x 100Ah)
BATTERIES HOUSING	Top of the pole /on the ground
REMOTE CONTROL	RADIO CONTROL
(OPTIONAL)	GSM CONTROL





[Frame3]

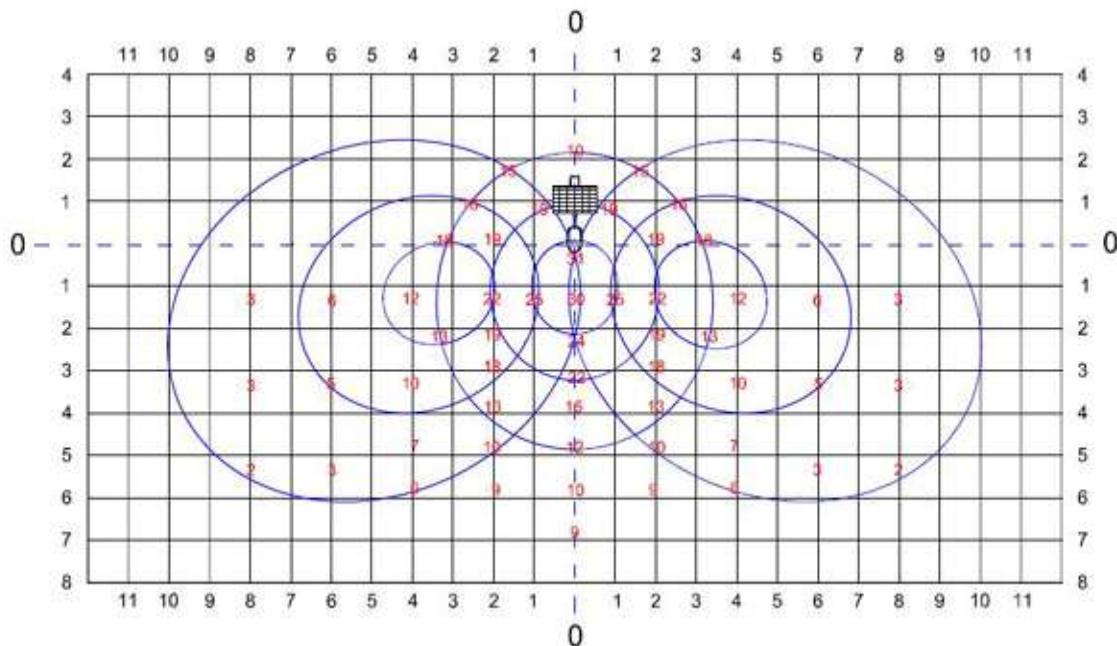
PRODUCT CODE	SSL30B-M-LED / SSL30-M-LED
PV MODULE	Monocrystalline Silicon
MODULE POWER	150Wp (northern IT) - 125Wp (central IT) - 100Wp (southern IT)
KIND OF LAMP	LAMP WITH No. 30 LED (efficiency: 100 lm/W)
LIGHT COLOUR	White Light
LUMEN	3000
LUX ON THE GROUND	35 lux (0 ml.) - 7 lux (10 ml.)
BATTERIES CAPACITY	200Ah - 12V - PB sealed (2x 100Ah)
BATTERIES HOUSING	Top of the pole /on the ground
REMOTE CONTROL	RADIO CONTROL
(OPTIONAL)	GSM CONTROL

WESTERN CO.
ELECTRONIC EQUIPMENTS - SOLAR SYSTEMS





Aria de dispersie pentru lampile cu LED



2. Seria - Lampi economice SOXE



[Frame4]

PRODUCT CODE	SSL18B-M / SSL18-M
PV MODULE	Monocrystalline Silicon
MODULE POWER	125Wp (central/southern Italy) / 150Wp (northern Italy)
KIND OF LAMP	SOX-E 18W (low pressure sodium)
LIGHT COLOUR	Amber Yellow
LUMEN	1800
LUX ON THE GROUND	8 lux (0 ml..) - 3 lux (10 ml.)
BATTERIES CAPACITY	200Ah - 12V - PB sealed (2x 100Ah)
BATTERIES HOUSING	Top of the pole /on the ground
REMOTE CONTROL	RADIO CONTROL
(OPTIONAL)	GSM CONTROL

WESTERN CO.
ELECTRONIC EQUIPMENTS - SOLAR SYSTEMS



WESTERN CO.
ELECTRONIC EQUIPMENTS - SOLAR SYSTEMS



[Frame5]

PRODUCT CODE	SSL26B-M / SSL26-M
PV MODULE	Monocrystalline Silicon
MODULE POWER	150Wp (central/southern IT) - 170Wp (northern IT)
KIND OF LAMP	SOX-E 26W
LIGHT COLOUR	Amber yellow
LUMEN	3700
LUX ON THE GROUND	12 lux (0 ml.) - 6 lux (10 ml.)
BATTERIES CAPACITY	200Ah - 12V - PB sealed (2x 100Ah)
BATTERIES HOUSING	Top of the pole /on the ground
REMOTE CONTROL	RADIO CONTROL
(OPTIONAL)	GSM CONTROL

WESTERN CO.
ELECTRONIC EQUIPMENTS - SOLAR SYSTEMS



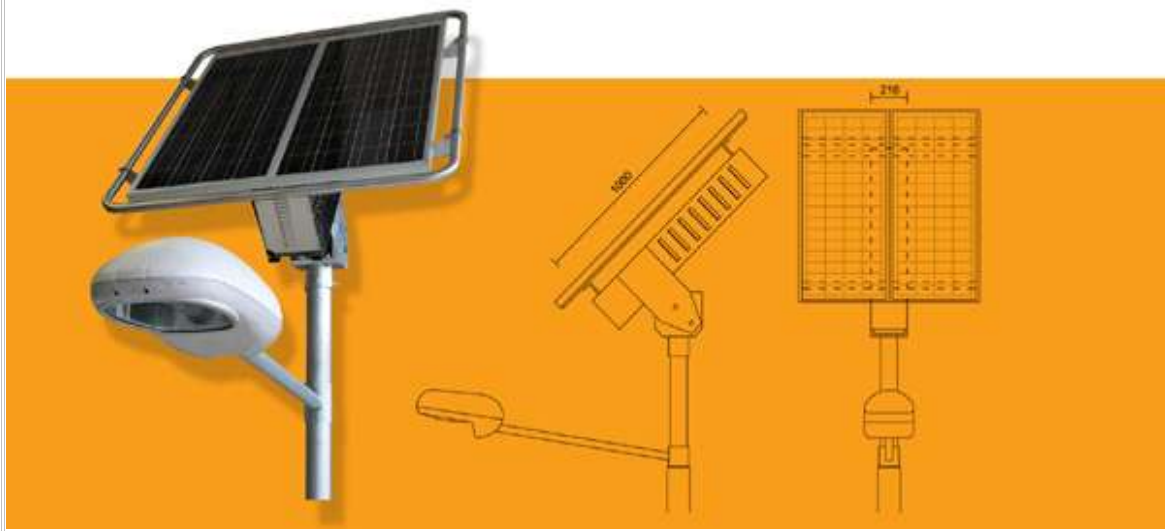
WESTERN CO.
ELECTRONIC EQUIPMENTS - SOLAR SYSTEMS





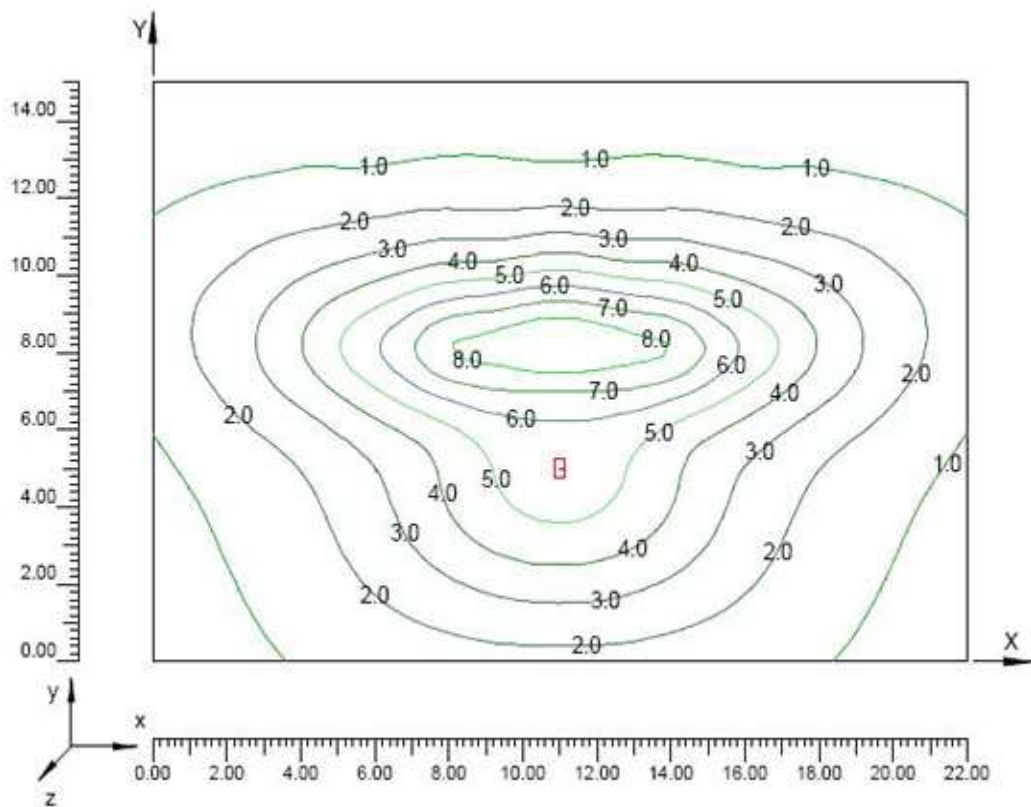
[Frame6]

PRODUCT CODE	SSL36B-M / SSL36-M
PV MODULE	Monocrystalline Silicon
MODULE POWER	170Wp (central and southern IT) - 200Wp (northern IT)
KIND OF LAMP	SOX-E 36W
LIGHT COLOUR	Amber yellow
LUMEN	6100
LUX ON THE GROUND	20 lux (0 ml.) - 13 lux (10 ml.)
BATTERIES CAPACITY	200Ah - 12V - PB sealed (2x 100Ah)
BATTERIES HOUSING	Top of the pole /on the ground
REMOTE CONTROL	RADIO CONTROL
(OPTIONAL)	GSM CONTROL

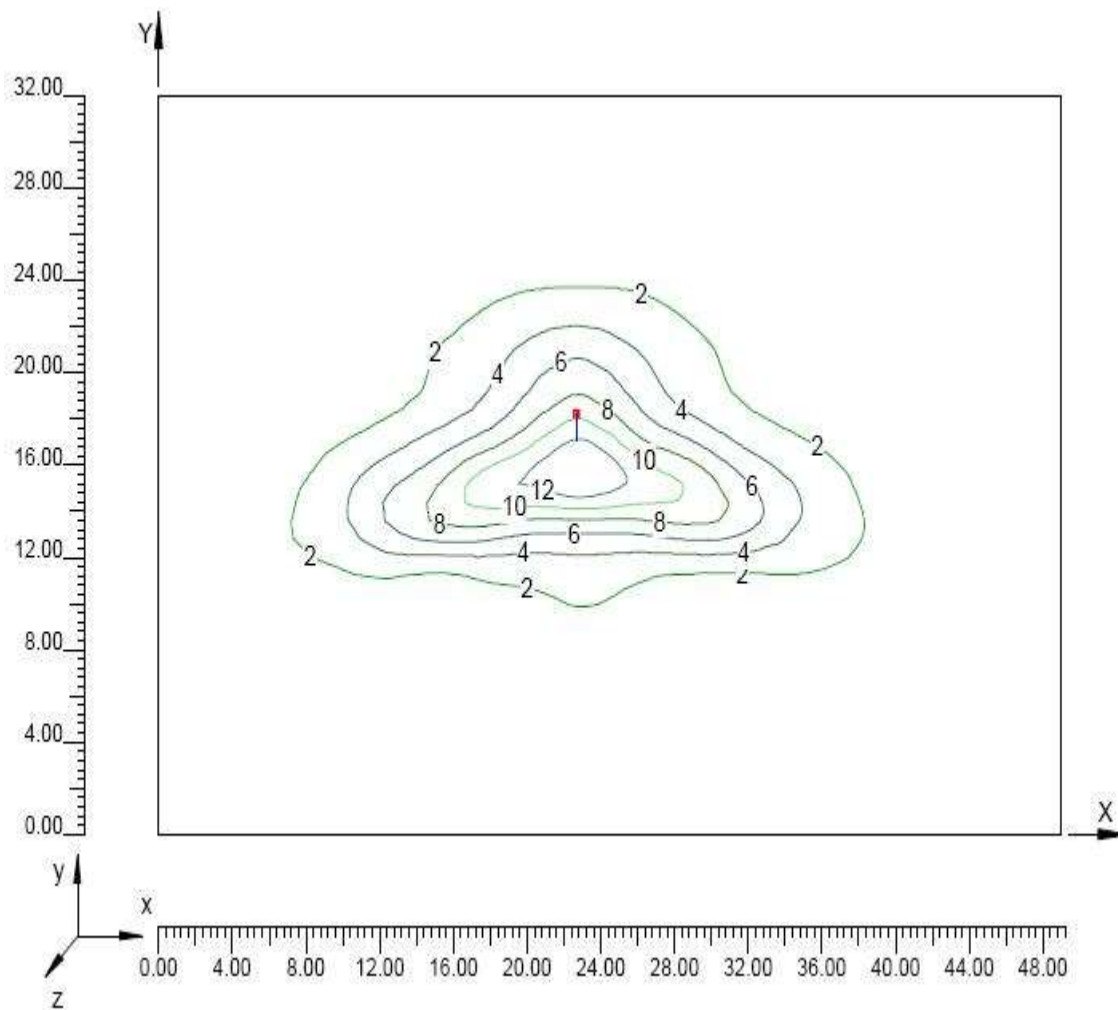




Aria de dispersie pentru lampile SOXE 18W

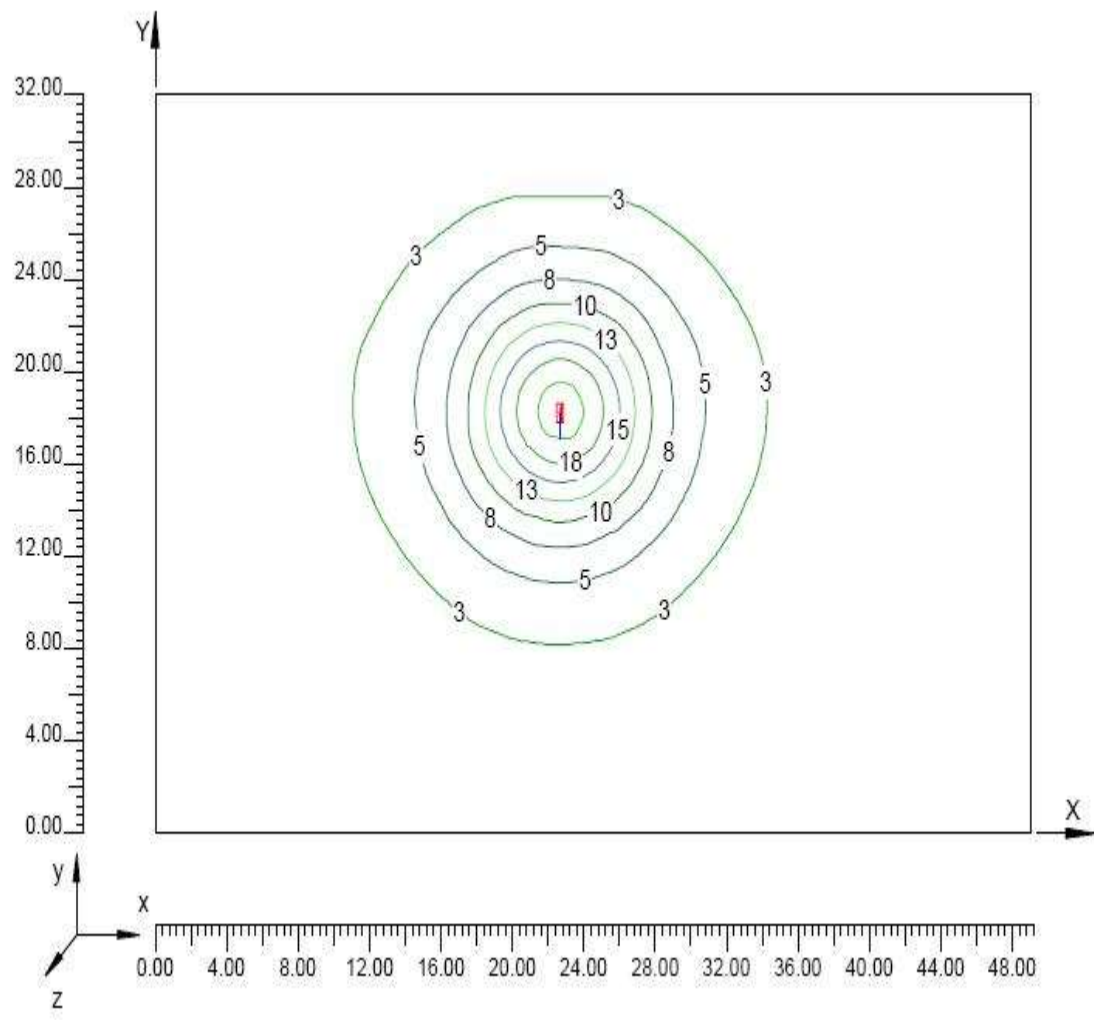


Aria de dispersie pentru lampile SOXE 26W

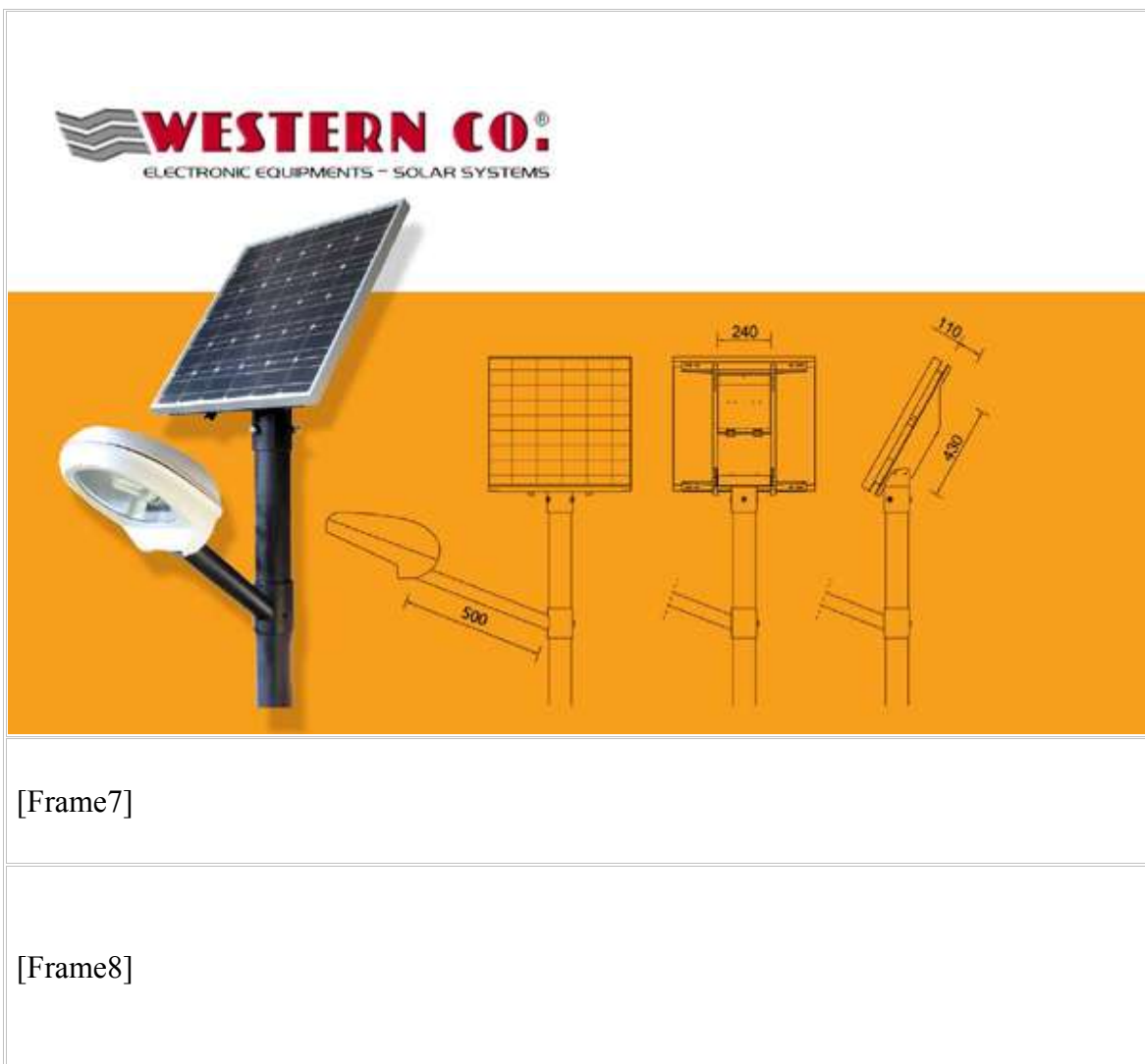




Aria de dispersie pentru lampile SOXE 36W



3. Seria - Lampi pentru parcuri si gradini

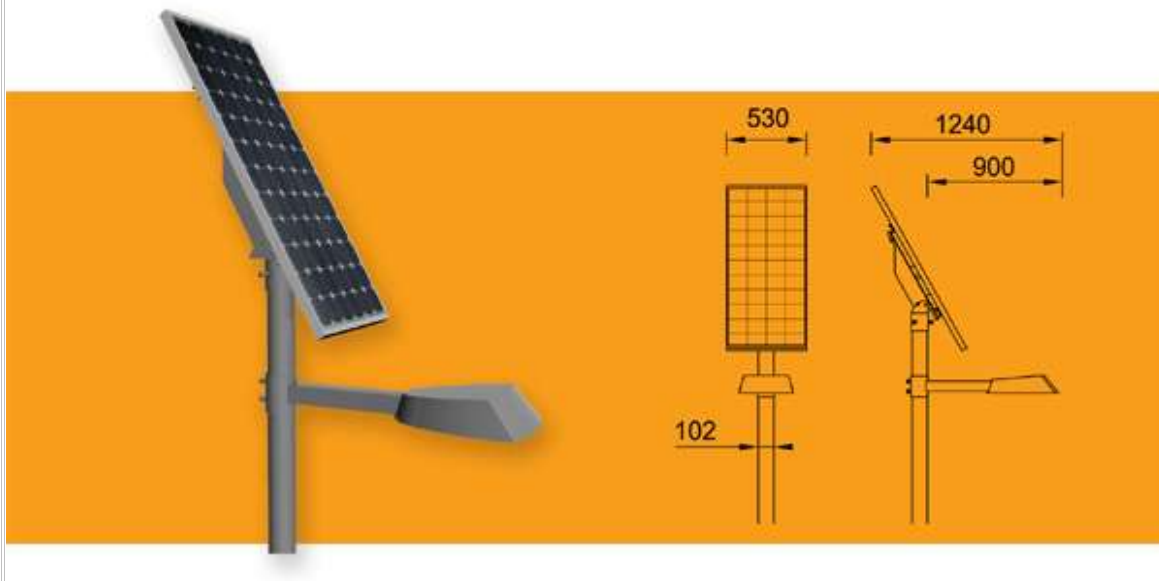


WESTERN CO.
ELECTRONIC EQUIPMENTS - SOLAR SYSTEMS



WESTERN CO.
ELECTRONIC EQUIPMENTS - SOLAR SYSTEMS

WESTERN CO.
ELECTRONIC EQUIPMENTS - SOLAR SYSTEMS



WESTERN CO.
ELECTRONIC EQUIPMENTS - SOLAR SYSTEMS



Grid Street-Lamp LED.30K1-230
Description: (230 V / 30 LED Lamp / 4.500 lm)
Dimension: 622 x 380 x 211 mm
Weight: 800g



Grid Street-Lamp LED.36K1-230
Description: (230 V / 36 LED Lamp / 5.100 lm)
Dimension: 622 x 380 x 211 mm
Weight: 800g



MPPT Charge Regulator SPB-LB12	
Description:	(10 A / output 12 V / switch controlled)
Dimension:	200 x 160 x 95 mm
Weight:	1,5 kg
MPPT Charge Regulator SPB-LB24	



Description:	(10 A / output 24 V / switch controlled)
Dimension:	200 x 160 x 95 mm
Weight:	1,5 kg
MPPT Charge Regulator SPB-LR12	
Description:	(10 A / output 12V / Radio controlled)
Dimension:	200 x 160 x 95 mm
Weight:	1,5 kg
MPPT Charge Regulator SPB-LR24	
Description:	(10 A / output 24 V / Radio controlled)
Dimension:	200 x 160 x 95 mm
Weight:	1,5 kg
MPPT Charge Regulator SPB-LG12	
Description:	(10 A / output 12V / GSM controlled)
Dimension:	200 x 160 x 95 mm
Weight:	1,5 kg
MPPT Charge Regulator SPB-LG24	
Description:	(10 A / output 24 V / GSM controlled)
Dimension:	200 x 160 x 95 mm
Weight:	1,5 kg

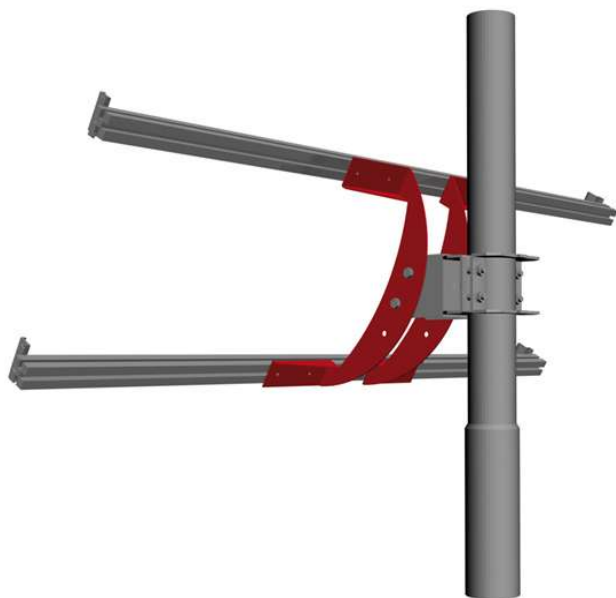




Western Adaptable Street Lighting Pole



Western Solar Module Bracket





Electronic Ballast SOX-E 18-36 24V	
Description:	(for 18 W, 26 W, 36 W / 24 V SOX Lamps)
Dimension:	124 x 78 x 48 mm
Weight:	300 g
Electronic Ballast SOX-E 18-36 12V	
Description:	(for 18 W, 26 W, 36 W / 12 V SOX Lamps)
Dimension:	124 x 78 x 48 mm
Weight:	300 g
Electronic Ballast SOX-E 35-55D 24V	
Description:	(for 35 W, 55 W / 24 V SOX Lamps)
Dimension:	124 x 78 x 48 mm
Weight:	300 g
Electronic Ballast SOX-E 66D 24V	
Description:	(for 66 W / 24 V SOX Lamps)
Dimension:	124 x 78 x 48 mm
Weight:	300 g
Electronic Ballast SOX-E 91D 24V	
Description:	(for 91 W / 24 V SOX Lamps)
Dimension:	124 x 78 x 48 mm
Weight:	300 g